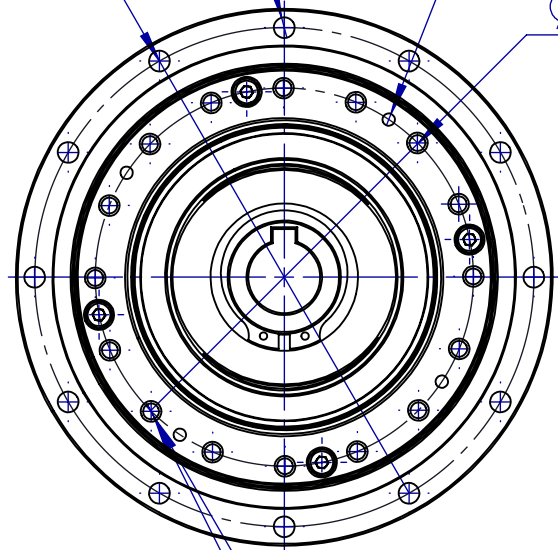


12- $\phi 5.50$ 贯穿

4 x M4 $\nabla 8$

$\phi 132$

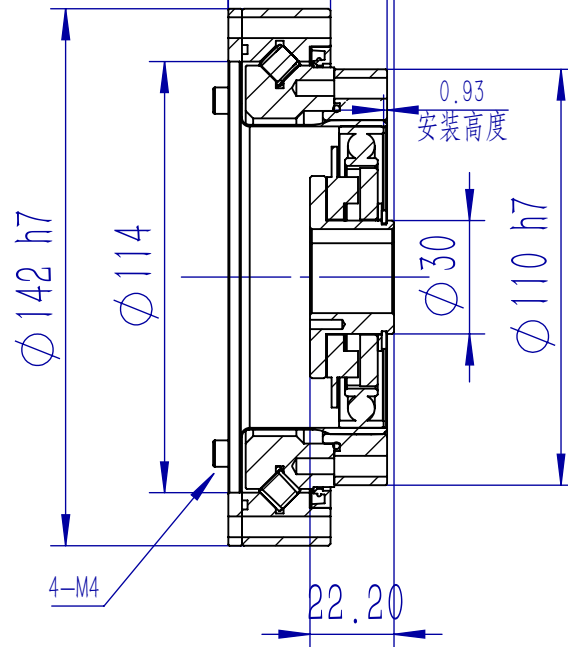
$\phi 100$



16- $\phi 5.50$ $\nabla 14$

16 x M5 $\nabla 9$

44 ± 0.2
42
27



0.93
安装高度

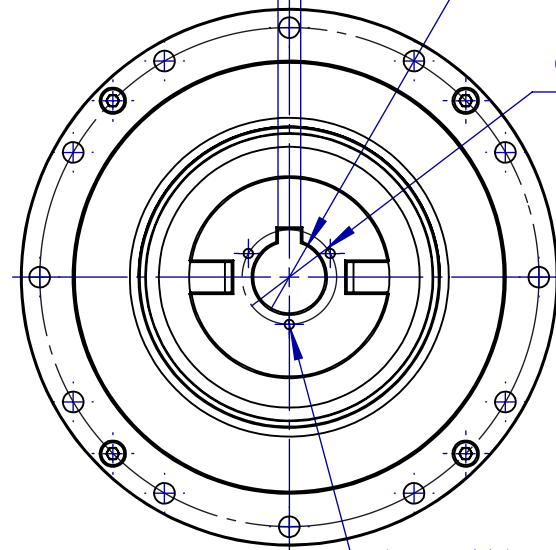
4-M4

22.20

6 ± 0.015

$\phi 19H8$

$\phi 25$



3 x M3 $\nabla 6$

SHF-32-xxx-1